

# Why the Farm Bill Could Shape Solutions for Small Landowners From All Walks of Life?

By: Sam Cook

---





## Sam Cook

Forester, Conservationist,  
& Soul Singer

### **Executive Director**

of Forest Assets at North  
Carolina State University's  
College of Natural Resources

### **Vice President**

of the Natural Resources  
Foundation Board

### **USDA Technical Services Provider**

and Registered Forester in NC  
and SC (41 plus year career as  
an industry forester)

### **SAF and WFC, President**

Land Trust Alliance, Forest  
History Society, and a member  
of the SFI Resource Committee

### **Former Board Member**

for the Triangle Land  
Conservancy in NC & NC  
Coastal Land Trust and Forest  
Resources Foundation, NC  
State Univ.

## The Impact of Climate Change on Farmers, Ranchers, and Forest Landowners

'It's a Disaster.' Drought dramatically shrinking California farmland, costing \$1.7 billion – **LA Times**

'The worst we've seen': Ranchers threatened by historic heat and drought – **The Washington Post**

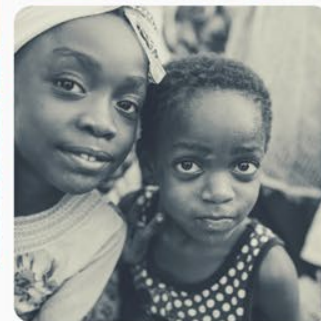
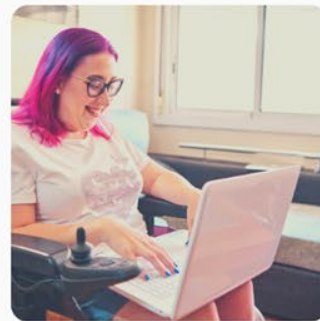
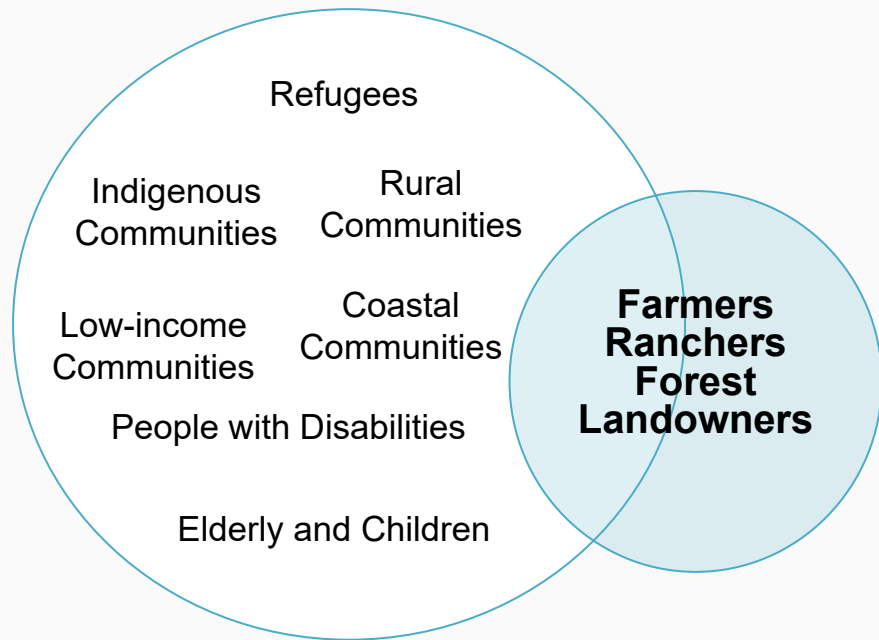
The end of a way of life? Ranchers struggle to survive the south-west's megadrought – **The Guardian**

Climate change is driving widespread forest death and creating shorter, younger trees – **CNBC**



# Most Vulnerable Populations

Small, limited resource, and socially disadvantaged



**“If You Care  
about Climate  
Change, Then  
You Care about  
the Farm Bill.”**

Nicole Greenfield,  
Natural Resources Defense Council  
(NRDC)

**18**

the number of farm bills since the first  
one passed in 1933



# Climate Solutions through the Farm Bill

Support programs through USDA NRCS



Soil Health



Nitrogen Management



Livestock Partnership



Grazing and Pasture



Agroforestry,  
Forestry and Upland  
Wildlife Habitat



Restoration of  
Disturbed Lands



Energy, Combustion  
and Electricity  
Efficiency



Wetlands - Returning  
a wetland and its  
functions



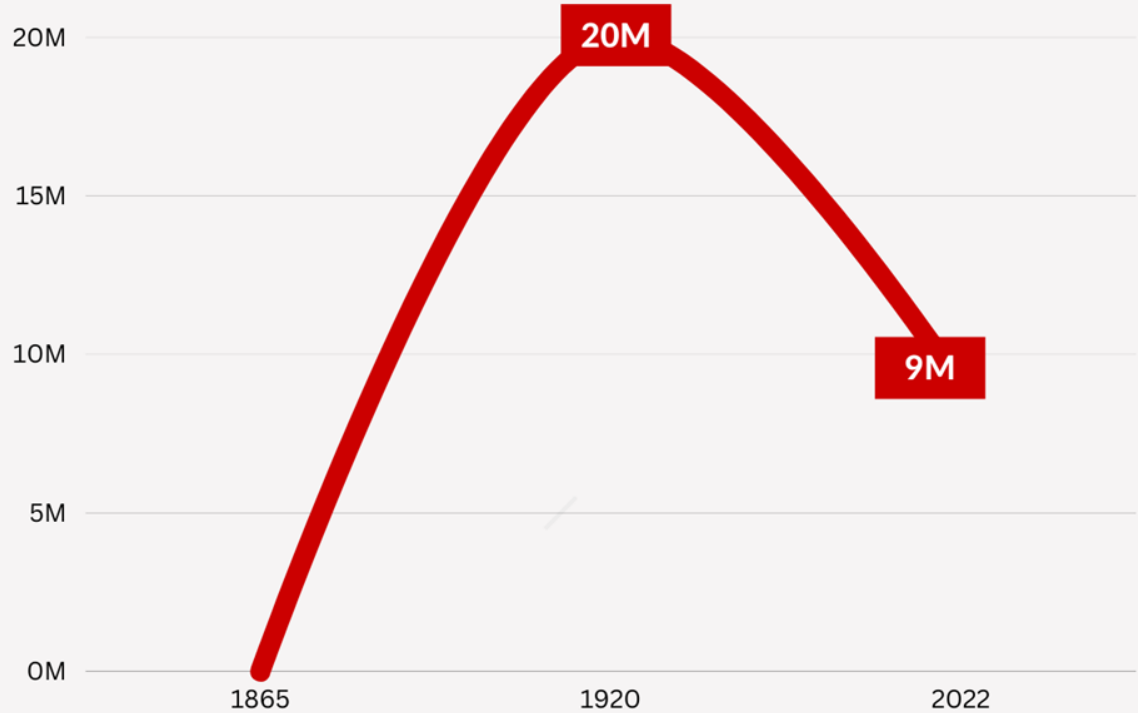
Rice –  
Reducing methane  
emissions



Equity and  
Inclusion

# History of Black Real Estate Ownership

- Jim Crow Laws
- Redlining
- Gentrification
- Systemic Racism
- Theft
- Partition Sales



## Origins of Issues Around Heirs' Property

Heirs' property ownership as a means of **family wealth** preservation.

Legal structure of Heirs' property ownership creates **vulnerabilities** contributing to family land loss.

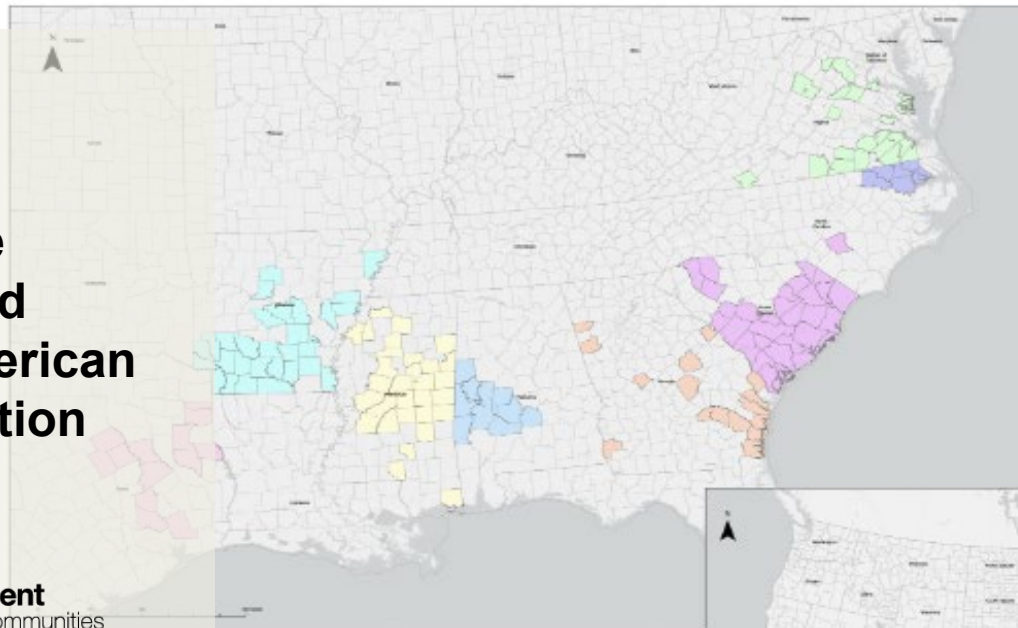
Significant loss occurred leading to **initiatives** to preserve Heirs' property.





# Sustainable Forestry and African American Land Retention Project

 **U.S. Endowment**  
for Forestry and Communities



- Site
- Black Family Land Trust
  - Center for Heirs Property Preservation
  - LRLEAN
  - McIntosh SEED
  - Prairie View A&M University
  - Roanoke Electric Cooperative
  - University of Arkansas at Pine Bluff
  - Winston County Self Help Coop

Disclaimer: This map was created for the sole purpose of communicating project boundaries where AFF is currently investing time, money and/or tools to contribute to impact on the ground. This is not representative of all historical AFF projects.

Sources: States and county boundaries are provided by the US Census Bureau (2019). Watershed boundaries are provided by USGS (2018). Projection: USA Contiguous Albers Equal Area Conic.

This map is up to date as of August 2021, if it requires an update or if you have questions contact Sam and a Debra: [sdaffing@forestfoundation.org](mailto:sdaffing@forestfoundation.org)



American Forest Foundation

